



EXPRESS YOURSELF AT A HIGHER LEVEL

www.SprungFloors.com

## Vinyl Specification Guide

### Mezzafloor

Full Roll Length	Width	Thickness	Weight	Dance Styles	Additional Information
65' 7.25"	6' 6.75"	0.07874"	4.89 lbs. per In. ft. 320 lbs. per full roll	Appropriate for most dance styles including ballroom, flamenco, folk, hip hop, Irish, jazz, modern and tap. Requires rosin for pointe.	Homogeneous vinyl is a heavy duty, contract-quality dance vinyl.
<b>Readily Available Colors:</b>		Matte Black and Dark Marbled Grey			



MEZZA-10

Matte Black

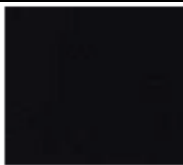


MEZZA-86

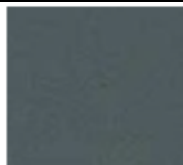
Dark Marble Grey

### Studiofloor

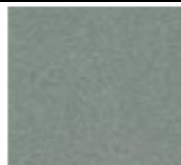
Full Roll Length	Width	Thickness	Weight	Dance Styles	Additional Information
60'	6'	0.1"	4.7 lbs. per In. ft. 280 lbs. per full roll	Suitable for all forms of dance including ballet, pointe, modern, and jazz.	Heterogeneous vinyl with (4) layers: clear wear layer, colored vinyl layer, backing layer, and backing cloth.
<b>Readily Available Colors:</b>		Black, Deep Grey, Grey, and Light Grey			



BLACK



DEEP GREY



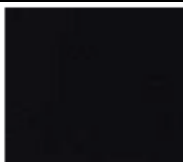
GREY



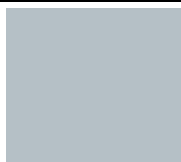
LIGHT GREY

### Duofloor

Full Roll Length	Width	Thickness	Weight	Dance Styles	Additional Information
91' 10"	6' 6.75"	.062992"	2.75 lbs. per In. ft. 247 lbs. per full roll	Appropriate for all dance styles such as ballet, modern, jazz, and tap.	Reversible vinyl is recommended for touring floors only.
<b>Readily Available Colors:</b>		Black/Grey			



BLACK



GREY

**COLORS WILL NOT BE AN EXACT MATCH - REQUEST A COLOR SAMPLE**

www.SprungFloors.com • 810-743-8281

