

## Vinyl Specification Guide

### Mezzafloor

Roll Length	Width	Thickness	Weight	Dance Styles	Additional Information
65' 7.25"	6' 6.75"	0.07874"	4.89 lbs. per ln. ft. 320 lbs. per full roll	Appropriate for most dance styles including ballroom, flamenco, folk, hip hop, Irish, jazz, modern and tap. Requires rosin for pointe.	Homogeneous vinyl is a heavy duty, contract-quality dance vinyl.
<b>Readily Available Colors:</b>			Matte Black, Dark Marbled Grey, and Marbled Grey		



MEZZA-10  
Matte Black



MEZZA-86  
Dark Marble Grey



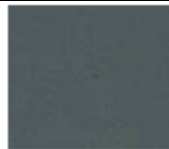
\* MEZZA-85  
Marble Grey

### Studiofloor

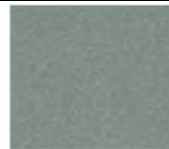
Roll Length	Width	Thickness	Weight	Dance Styles	Additional Information
60'	6'	0.1"	4.7 lbs. per ln. ft. 280 lbs. per full roll	Suitable for all forms of dance including ballet, pointe, modern, and jazz.	Heterogeneous vinyl with (4) layers: clear wear layer, colored vinyl layer, backing layer, and backing cloth.
<b>Readily Available Colors:</b>			Black, Deep Grey, Grey, and Light Grey		



BLACK



DEEP GREY



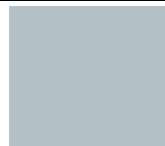
GREY

### Duofloor

Roll Length	Width	Thickness	Weight	Dance Styles	Additional Information
91' 10"	6' 6.75"	.062992"	2.75 lbs. per ln. ft. 247 lbs. per full roll	Appropriate for all dance styles such as ballet, modern, jazz, and tap.	Reversible vinyl is recommended for touring floors only.
<b>Readily Available Colors:</b>			Black/Grey		



BLACK



GREY

**COLORS WILL NOT BE AN EXACT MATCH - REQUEST A COLOR SAMPLE**

All vinyl orders are based on availability. Out of stock colors may need 4 - 6 week lead time.

\*Special order color with a 4-6 week lead time.

**www.SprungFloors.com • 810-743-8281**